

## Spencer Shakespeare : Pink Moon

Projects Twenty Two is pleased to present Pink Moon, an exhibition of new paintings by Spencer Shakespeare; one of the most unique artists living and working in Cornwall today. From his remote studio, a wooden hut perched atop the rolling hills of the Tamar Valley, he paints to evoke the spirit of the land. Each canvas, executed with unmistakable conviction, brims with a buoyant dynamism – a worldly mesh of memory, myth and fable, where the cliffs, seas, skies and trees vibrantly shimmer.

But what we see in these paintings cannot be pinpointed on a map, instead they are hypnagogic distillations of experience, and chronicles of a deep kinship with the natural world. This is because Spencer is an artist who truly lives his work. Whether scrambling over hedgerows, wading through rivers, hiking across moorland, or climbing the granite tors with his sketchbook in hand, the results are a generous wealth of wisdom shared with you, the viewer.

His paintings, fervent memoirs that are magnetic in their intensity – relatable yet alluringly ethereal – harness that indisputable joy of discovery and creation. The directness achieved is striking, uncomplicated yet exuberant; a scintillating spiritual alchemy where images appear to constantly unfold and offer themselves anew. In recent times, Spencer has also created a series of dynamic still-lives that hold all the power and passion of those landscapes. In his studio, a small wooden Dala Horse gazes out of the window, and it has become a repeated motif, a means of demonstrating rootedness and fortitude. As the world is in rapid motion around it, its four hooves remain fixed and its stance consistent. It is certainly of no coincidence that this can also describe the underlying impetus of Spencer's work – a constant search for the timeless and enduring. His work captures experiences at the edges and boundaries of the land, reimagined with a dream-like radiance.

Spencer Shakespeare: Pink Moon is curated by Dr Matt Retallick

[@projectstwentytwo](#) / [@spencershakespeare](#) / [@matt\\_retallick](#)

The exhibition can be viewed at [Projects 22](#) until the 2nd of November Monday-Saturday 10-5pm, Sundays by appointment and [online](#).

Pink Moon 2024

200x200 cm

*Acrylic, Oil and Graphite on Canvas*

£10500



Mother 2024

120x90 cm

*Acrylic, Oil and Graphite on Canvas*

£4000





Moonlight 2024

115x95 cm

*Acrylic and Oil on Canvas*

£3750





Parade 2024

75x105 cm

*Acrylic, Oil and Graphite on Canvas*

£3000





Old Friends 2024

115x95 cm

*Acrylic, Oil and Graphite on Canvas*

£3750





Moonlight II 2024

*100x70 cm*

*Acrylic and Oil on Canvas*

£3000





Water Rites 2024

76.5x61 cm

*Acrylic and Oil on Canvas*

£2500





Harbour 2024

95x70 cm

*Acrylic, Oil and Charcoal on Canvas*

£2750





Talking to the Garden 2024

*115x95 cm*

*Acrylic and Oil on Canvas*

£3750





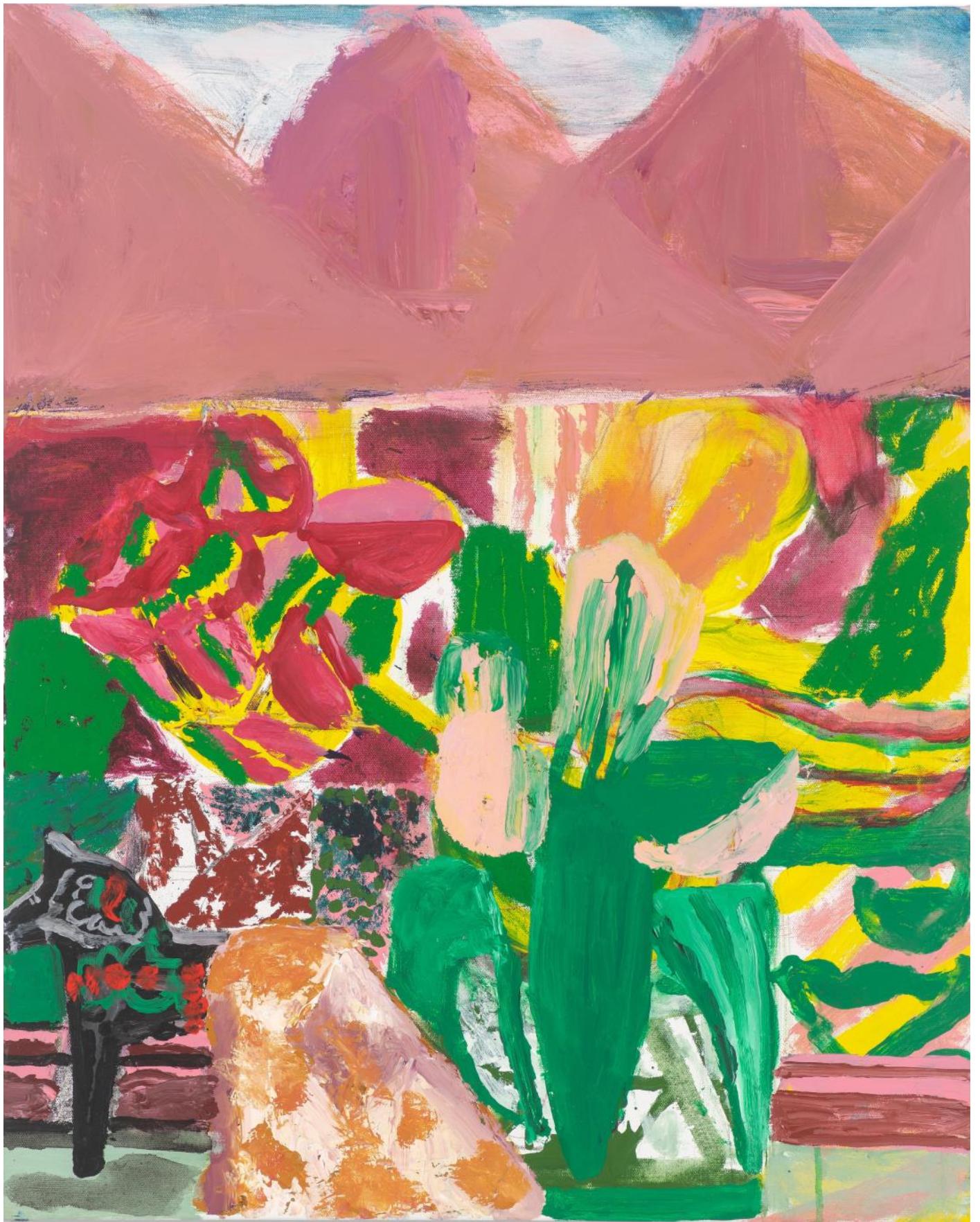
Looking Out 2024

76.5x61 cm

*Acrylic, Oil and Charcoal on Canvas*

£2500





The Birth of Dionysus 2022

80x60 cm

*Acrylic and Oil on Canvas*

£2500





The Procession 2022

80x60 cm

*Acrylic and Oil on Canvas*

£2500





Assembly 2024

76.5x61 cm

*Acrylic and Oil on Canvas*

£2500







Daffodils, Owl and Pony 2024

*41x31.5 cm*

*Acrylic and Oil on Canvas*

£750



How does it Feel? 2023

*51x51 cm*

*Acrylic and Oil on Canvas*

*£1500*





Athena 2023

115x95 cm

*Acrylic, Oil and Charcoal on Canvas*

£3750







Trees are People too 2023

170x195 cm

*Acrylic, Oil, Spray Paint and Charcoal on Canvas*

£9600



Bird of Prey 2024

80x105 cm

*Acrylic, Oil and Graphite on Canvas*

£3250





Swimming 2024

95x115 cm

*Acrylic and Oil on Canvas*

£3700





Rhythm 2024

76.5x61 cm

*Acrylic and Oil on Canvas*

£2500



Magic Tree 2021

*39x56.5 cm unframed 54x71.5 cm framed*

*Acrylic and Graphite on Paper*

*£1050*





Tree Spirit 2021

*38x28 cm unframed 54x43.5 cm framed*

*Acrylic and Oil Stick on Paper*

£750







Seraph 2021

*38x28 cm unframed 54x43.5 cm framed*

*Acrylic, Graphite and Charcoal on Paper*

£750



Something in the Water 2021

*38x28 cm unframed 54x43.5 cm framed*

*Acrylic, Water Colour, Graphite and Oil Stick on Paper*

£750





SS 21

Bathers 2021

*38x56 cm unframed 54x71.5 cm framed*

*Acrylic and Graphite on Paper*

*£1050*



